

# Berkeley Partners For Parks



*Improving Berkeley's parks, community gardens, and open space.*

Summer 2001 Vol. 5, No. 1

## *"Dreamland for Kids" is a Reality*

## *FY02-03 Parks Budget*



*Joseph Newell, Tyler Swanson & Mayor Shirley Dean Cut the Ribbon at Dreamland*

The biggest news for the approved two year parks budget is the merger of three additional programs in Parks. Recreation, Camps and the Young Adult Project's programs and budget have been moved from Health and Human Services into Parks and Waterfront. BFPF hopes that Parks and Recreation will form a natural symbiosis that produces greater recreation services in our parks.

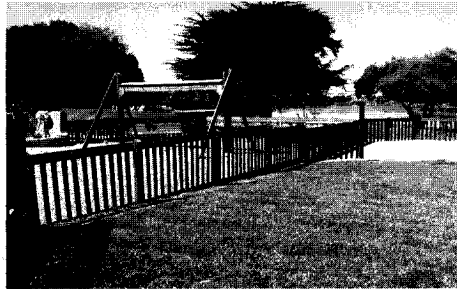
It was anticipated that after a public process the City's per-capita share of voter-approved State Prop. 12 money would go to many capital improvement needs in Berkeley's Parks. Instead it is being directed by Council to a few very needy projects-the City's dilapidated recreation centers, and a smaller amount for Harrison Fields Skate Park and sports courts resurfacing. The City Council seems unwilling to fund on-going maintenance out of the General Fund. In place of a regular maintenance program for City-owned buildings, leaky roofs and seismic renovations have to wait for a large windfall like Prop. 12.

Thanks to more than two thousand volunteers, the Berkeley Partners for Parks-led effort to build a dream playground at Aquatic Park came true in spring of 2000. In just nine days, hundreds of adults and kids from all walks of life, hammered wood, soaped screws and put in the team work to make an amazing play structure for all of Berkeley's kids. The playground was designed by the architectural firm Leathers and Associates in conjunction with kids children from Berkeley's Washington, Walden, Black Pine Circle and Arts Magnet elementary schools. Joseph Newell, a 9 nine-year-old from Washington School, won the Name the Playground Contest by coming up with the playground name, "Dreamland for Kids", voted as their the favorite by all the kids.

School, Community Impact, and the Albany Football Team. Without our patron's additional financial help and these groups' volunteer efforts,

*(Continued on page 4)*

### *Lions Build Picnic Area at Dreamland*



The Berkeley, Albany, West Berkeley and Kensington Lions Clubs came out this May and built a beautiful new picnic area for Dreamland for Kids. Gary Yee took on and coordinated the project for the Lions, and contractor Michael McDowell led the construction efforts. The picnic area is already getting lots of use. Thanks Lions!

Playground renovation funding stays the same at \$150,000 per year from the General Fund. This is about enough to replace two playgrounds per year. However, the City has made replacing arsenic-treated wood playgrounds a priority and it is anticipated additional funds will become available for this purpose. The pace is quick enough for routine replacement, but not fast enough to make headway on the backlog of worn-out playgrounds. Playground renovation of non-arsenic playgrounds is actually slowing as federal block grant money

A special thanks to all our playground patron donors (listed in the sidebar) and to the Rotary, Kiwanis, Lions, Boy Scout Troops 23 and 24, Tomen Agro, Berkeley High School, Irvington High

*(Continued on page 2)*

## Voters Support Berkeley's Parks

Thanks to the tremendous support of adopt-a-park members and playing fields user groups, combined with the assistance of dozens of City of Berkeley workers volunteering their off-work hours to distribute literature, Measures S and W met with an overwhelming victory on Election Day, November 7, 2000.

Measure S will raise an additional \$600,000 annually to cover new expenses to maintain our expanding park system. These funds will go toward taking good care of new features such as Dream Land for Kids at Aquatic Park, the Gabe Catalfo Playing Fields, refurbished tot lots throughout the City, the new skate park, Civic Center and Marin Circle fountains, as well as improving landscaped medians such as those that serve as the gateway to our city on University Avenue, cleaning of the Aquatic Park lagoon, and expanded tree planting and maintenance. In the coming year, we should start to see the fruits of this important victory!

Thank you to all for joining with us to pass S & W!

Berkeley Partners for Parks  
PO Box 13673  
Berkeley, CA 94712

President: Ted Gartner, 510-548-9235

Chair: Zasa Swanson, 510-649-9874

Treasurer: John Caner

Website: [www.bppf.org](http://www.bppf.org)

Email: [mail@bppf.org](mailto:mail@bppf.org)

Parks Email List: Send email to [mail@bppf.org](mailto:mail@bppf.org) with subject "subscribe"

Meetings are held third Monday of the Month, 7:30PM to 9:00PM, Corporation Yard, 1326 Allston Way.

BPPF is a nonprofit 501(c)3 corporation founded in 1994 to support parks and open space in Berkeley

## We Want You... To Volunteer in Berkeley's Parks

Here are some parks projects for 2001 that need your volunteer labor. For more volunteer opportunities, see BPPF's website at <http://www.bppf.org>.

### Stoneface Park

Jane Hammond 524-6031

Volunteers will construct a landscaped berm along the west side of Stoneface Park as a means to improve safety and enhance the park. The group will also install park benches.

### Berkeley Pier

Jess Wendover 486-2845

A system of signage will be installed explaining the history of the Berkeley Pier and Marina. Volunteers are needed to help research this history.

### Sonoma/Hopkins Triangle

Elyce Judith 526-2989

Volunteers will landscape the large asphalt triangle adjacent to the North Berkeley Library.

### Dorothy Bolte Park

Vanessa Moraga 527-2556

Volunteers will add play panels and arch climber to existing play structure (July '02). Volunteer gardeners needed (right away).

### Ohlone Greenway

Karl Linn 527-7162

Seating and planting needs to be done.

### Aquatic Park

Carol Thornton [ct@rb2.swrcb.ca.gov](mailto:ct@rb2.swrcb.ca.gov)

Ongoing gardening of native habitat. Send an email to be notified of upcoming gardening dates.

### San Pablo Park

Stephen or Zasa Swanson 649-9874

Concrete workers are needed before we can install new park benches and chess tables. Great service club opportunity

## Expansion Opportunity for Aquatic Park

American Soils is vacating its large site adjacent to Aquatic Park at Bancroft Way and Bolivar Drive (they're moving to a larger site in Richmond). This would make an ideal expansion area for Aquatic Park. A playing field, sports courts, nature area, a rock climbing area, or other amenities could be added to this large site as a public process could determine. Aquatic Park could be a destination park for all of Berkeley, having the widest range of recreational opportunities of any Berkeley park. Aquatic Park could better serve a recreation-ally under-served neighborhood that currently does not have playing fields or sports courts.

This is perhaps Berkeley's last chance to significantly expand park acreage. It is an ideal location to serve Berkeley's growing population for the 21st century.

Both Berkeley Partners for Parks and the City's Parks and Recreation Commission have asked the City to investigate acquiring this property. The City Council has voted to ask staff to study the issue.

This dream is unlikely to become a reality without citizen involvement. Send an email to the Mayor and Council at [clerk@ci.berkeley.ca.us](mailto:clerk@ci.berkeley.ca.us) or write to 2180 Milvia St. 94704 in support of acquiring the American Soils property for park use. Also, send us an email at [mail@bppf.org](mailto:mail@bppf.org) or call 510-649-9874 to keep informed of future developments.

(Parks Budget—Continued from page 1)

is no longer allocated for playgrounds.

The good news is voter-approved Measure S will result in improved parks maintenance, facilities inspections, expanded tree planting and maintenance, and Aquatic Park lagoon cleaning (see "Voters Support Berkeley's Parks" on this page).

# Adopt-a-Park News

## Berkeley Path Wanderers Continues Path Improvements by Susan Schwartz

Berkeley Path Wanderers' Association completed two more path-improvement projects using the last of their first Berkeley Parks mini-grant, and are ready to launch more with their new grant. The group also is working closely with the city on planned repairs and improvements to Tamalpais Steps, Easter Way, Martinez Path, and North Crossways. Last but not least, thanks to a generous donation from Councilmember Betty Olds, we hope to have an accurate path map available by the end of the year.

Twin Path and Latham Lane were the latest of the slippery dirt hill paths improved with wooden steps and better grading. They were improved in a continuing partnership with Berkeley Boy Scouts, by Eagle Scout candidates Sven Chilton, Ian Saulsberg, and Matt Seuferer, all of Berkeley Troop 19.

Due for improvement with the next grant are Atlas Path, Sterling Path, and Acacia Walk. In partnership with Friends of Five Creeks, Path Wanderers also has begun planning an "urban trail" linking Tilden Park to the Bay Trail via Berkeley Paths and Codornices Creek. Building the three-segment Glendale Paths will be a key part of this project.

## Friends of Five Creeks: Creek restoration with Friends of Five Creeks

Friends of Five Creeks invites you to stroll along Codornices Creek from 10th

to 8th Streets north of Harrison (south border of University Village). A new trail built by volunteers this year now joins the existing trail from 8th to 9th Streets. The project is a preview of the hoped-for restoration and creekside trail from San Pablo west to the new Berkeley sports fields. Volunteers Tom and Jane Kelly are coordinating the project, which has been "adopted" by 17 Reasons, a group of Bay Area young professionals who do various volunteer projects.

Friends of Five Creeks completed clearing and initial planting at Cerrito Creek and the Ohlone Greenway last winter -- the monkeyflower, evening primrose, and poppies are blooming already. The group is focusing now on a major creekside trail project, from El Cerrito's Creekside Park west to Pierce Street.

In addition, Friends of Five Creeks "unveiled" their new concrete, wood, and steel railing on Codornices Creek at the Ohlone Greenway in January 2001. The handsome new rail replaces an ugly cyclone fence at the site, which volunteers have been restoring for three years. A Berkeley Parks mini-grant paid for materials. The next step will be adding creek-related art, with a grant from Alameda Countywide Clean Water. Local sculptor Bill Kreitz is working on sculptures of quail - Codornices means "quail" in Spanish.

With a grant from the Rose Foundation for Communities and the Environment, Friends of Five Creeks is using automated equipment to record flow, temperature, and conductivity in Codornices and Cerrito Creeks. Funds from the Coastal Conservancy also are paying for preliminary studies on the feasibility of enlarging the Al-

bany Salt Marsh at the mouth of Codornices and Village Creeks. This remnant of what was once much larger marshes is south of Buchanan Street, between Golden Gate Fields and the freeway.

For more information on the group and its activities, call 510-848-9358, email F5creeks@aol.com, or see our website at www.fivecreeks.org.

## John Hinkel Park by Carol Mimura

The City of Berkeley Dept. of Parks and Waterfront financed, under its mini-grant program, the installation of two new spring-rider toys in the playground area of John Hinkel Park. The new equipment was installed in October and is being enjoyed by children in the 2-8 year age category. Tires were also buried under the existing see-saw and have been a welcome new safety feature. Carol Mimura, the minigrant recipient, thanks Syd Temple of Questa Engineering for the design and implementation of drainage for the new play area and members of Congregation Beth El for volunteer labor and enthusiasm. In addition, we thank park neighbors for their volunteer efforts and Brad Ricards of the City of Berkeley for support, guidance, and volunteer labor throughout.

## Dorothy Bolte Park News Vanessa Moraga

Last fall, Friends of Dorothy Bolte Park (with enthusiastic help from several Kiwanis Club members) completed the play

*(Continued on page 4)*

# I want to support Berkeley's Parks and Open Space.

- Has your membership to BFPF expired? Check your mailing label.
- Make your checks out to BFPF. Contributions are tax deductible to the extent provided by law.

Name(s): \_\_\_\_\_ Email: \_\_\_\_\_

Address: \_\_\_\_\_ Phone: \_\_\_\_\_

City/State/Zip: \_\_\_\_\_

- \$1-25 (low income)
- \$30 (individual membership)
- \$40 (family membership)
- \$50 (contributing membership)
- \$100 (supporting membership)
- \$250 (business membership)
- \$500 (benefactor membership)
- \$1,000 (patron membership)
- Other: \$ \_\_\_\_\_

Contributors of \$50 or more are entitled to receive a complimentary T-shirt (natural color with BFPF's logo in forest green); if you are giving \$50 or more, please indicate your preferred T-shirt size:  Medium  Large  Extra Large

*(Continued from page 1)*

BPPF could not have accomplished the gargantuan task of building the playground. And an extra special thanks to the Kiwanis and Lions for taking on additional projects at the playground after the initial build (a drinking fountain and adjacent picnic area, respectively).

Be sure to come visit Berkeley's favorite playground at Bolivar Drive and Bancroft Way in Aquatic Park. Public restrooms and picnic facilities are available.

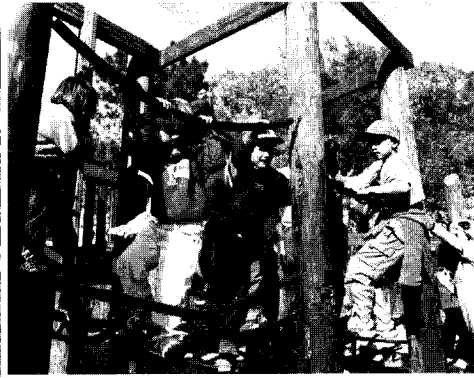
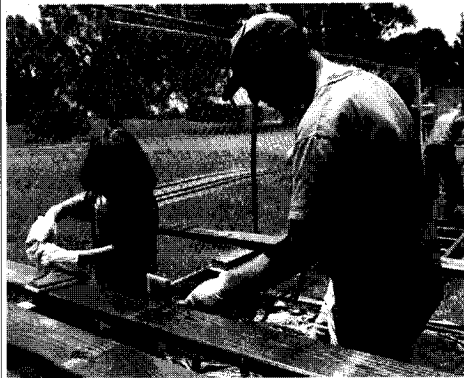
Did you miss out on this incredible community experience? Well, you're in luck because on Friday, September 7 from 10AM to 6PM, we're having a volunteer workday to put in an Ecology Garden, and to re-varnish the wood at the playground. We need unskilled and skilled individuals and groups. For more information, please contact Project Coordinator Zasa Swanson at 649-9874.

Dreamland also needs more donations so we can add more amenities like a bike rack. You can "Buy a Brick" with your name inscribed on it-see the blue flyers at the playground. Or donate \$1,000 or more and become a Playground Patron and have your name inscribed in bronze.

Thanks to Our  
Major Donors to  
Dreamland for Kids

Natasha Beery &  
William McCoy  
Berkeley Lions  
Berkeley Rotary  
Bill Hobi & Soojung Ko  
East Bay Disc Golf Club  
The Goldin Family  
Great Works, Inc.  
Haws Corporation  
Lions Club of Berkeley  
Rotary of Berkeley  
Tomen Agro  
Victor Bull  
Walden School

## Dreamland Photo Gallery



*(Continued from page 3)*

structure in the lower area, and installed a two-seater spring rider plane in the upper tot area.

This summer (2001) we will finish upgrading the toddler area/structure with an arch climber and 2 wall panels. The final touch is a bench for this area, which we will purchase with remaining funds from the mini-grant.

There is no more space for play equipment, but we do still hope to landscape the surrounding slopes whose seemingly ever-expanding mass of weeds and hardpan soil has defeated us so far. We would like to expand the volunteer group beyond immediate neighbours with children, and draw others into our group-particularly local gardeners who might like to develop this area and contribute their ideas, resources and gardening skills to the park. Contact Vanessa Moraga: 510-527-2556 or email: moraga@lmi.net .

**Friends of Strawberry Creek**  
Janet Byron

Please join us for a workshop to develop an effective strategy for promoting the daylighting of Strawberry Creek in downtown Berkeley. There are several interesting

and promising proposals floating around to daylight the creek downtown. Let's figure out how we can make it happen!

The workshop will be facilitated by Louis Hexter of MIG, a professional strategic planning agency specializing in community development. We will learn about current daylighting concepts for Center Street, MLK Jr./Civic Center Park and other downtown sites, and develop a working plan for the next year and beyond.

The workshop is from **6:30 to 9:30 pm, Tuesday, August 7** at the Corporation Yard Green Room, 1326 Allston Way. Pizza and snacks will be served.

Also, there will be ivy removal and debris clearance work parties at Strawberry Creek Lodge, 1320 Addison St., on August 4, August 18 and September 8 from 10AM to 1PM.

The "grand plan" is to remove non-native vegetation, clear debris from the creek bed, and to plant native species.

There will be a general organizational and planning meeting on September 26, Tuesday, from 6:30 to 8 pm at 1326 Allston Way.

**Please RSVP as soon as possible.**  
Hope to see you there!